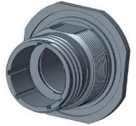


# PLATING

## WHAT IS IT?

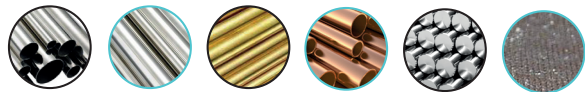


Apply a coating to machined parts: connectors, contacts, boxes...

### In order to add new properties:

- 1 Corrosion resistance
- 2 Electrical conductivity
- 3 Self-repair
- 4 Lubrification
- 5 Aesthetic aspect

## THE MATERIALS PROCESSED



Aluminium Stainless steel Brass Copper Steel Composite

## THE PROPOSED TREATMENTS

- Cadmium plating (green, white, dichromate) \_\_\_\_\_
- Chemical nickel plating \_\_\_\_\_
- Electrolytic nickel plating \_\_\_\_\_
- Silvering in a barrel \_\_\_\_\_
- Copper plating, nickel plating and barrel plating \_\_\_\_\_
- Nickel plating, gold plating, tin plating of cut contacts \_\_\_\_\_
- Passivation of stainless steels \_\_\_\_\_
- Composite metallization \_\_\_\_\_
- Black Nickel \_\_\_\_\_
- Zinc Nickel Black \_\_\_\_\_



➤ APPLICATION PROCEDURES: barrel, rack or continuous

# Amphenol SOCAPEX

## THE PLATING WORKSHOP



24 PEOPLE

8x2

PRODUCTION



LABORATORY

Bath analysis and physico-chemical station + R&D



SUPPORT SERVICES

Scheduling  
Methodology  
Quality

## THE CONTROL OF THE COATINGS

- Adhesion
- Appearance
- Thickness



### The means of control:

- X-ray fluorescence devices
- Binocular
- Salt fog chamber
- Potentiostat



## DID YOU KNOW ?



➤ The workshop makes cadmium deposits and is authorised by [ECHA](#) (European Chemicals Agency) until 2029 to use Chromium 6 (Cr6+) and thus offer green & dichromated cadmium.



➤ A R&D team is developing new coatings that are more respectful of the environment (Zinc Nickel) and optimizes the process of existing routings.

## MANAGEMENT AND PROCESSING OF WASTE

### Integrated physico-chemical station

- 15m<sup>3</sup> of water per day
- Continuous monitoring of discharges

